

# LONGREACH REGIONAL COUNCIL

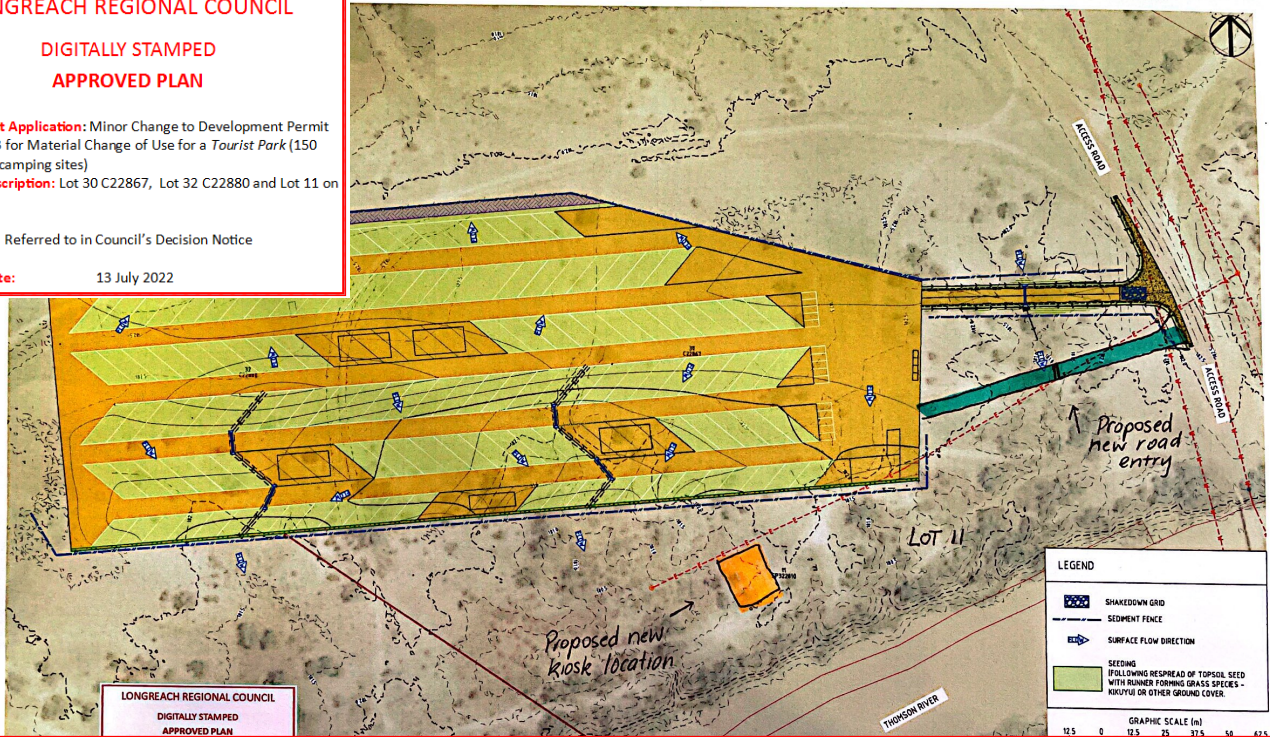
## DIGITALLY STAMPED APPROVED PLAN

**Development Application:** Minor Change to Development Permit DA20/21-003 for Material Change of Use for a *Tourist Park* (150 caravan and camping sites)

**Property Description:** Lot 30 C22867, Lot 32 C22880 and Lot 11 on SP332287

Referred to in Council's Decision Notice

**Approval Date:** 13 July 2022



Proposed changes

MCUMC1

27/04/22 (Received date)

# Thomson River Caravan Park Locality Plan

Lot 32 on C22880 and Lot 30 on C22867

LONGREACH REGIONAL COUNCIL

DIGITALLY STAMPED  
APPROVED PLAN

**Development Application:** Minor Change to Development Permit DA20/21-003 for Material Change of Use for a *Tourist Park* (150 caravan and camping sites)

**Property Description:** Lot 30 C22867, Lot 32 C22880 and Lot 11 on SP332287

Referred to in Council's Decision Notice

**Approval Date:** 13 July 2022

Amended in red by Council  
08/07/22

## Legend

- Site Property Line
- Unallocated State Land
- Reserve Land
- Highway
- Local Road
- Proposed Access Road
- Old Bridge
- Proposed point of connection to reticulated water infrastructure

## Locality Plan

Project: Thomson River Caravan Park  
Location: Longreach, Queensland  
Datum: Geocentric Datum of Australia 1994  
Projection: Web Mercator EPSG 102100  
Local Authority: Longreach Regional Council



0 100 m

1:6000

Access location to be in accordance with:  
Proposed changes with reference MCUMC1 dated 27/04/22 (Received date)

Note: Dimensions and measurements are approximate only

19 October 2020 MP

Source: Satellite Imagery sourced from Queensland Globe

Appendix C – Proposal Plans



## STORMWATER MANAGEMENT PLAN

### LANDSBOROUGH HIGHWAY, LONGREACH, QLD, 4730



SHEET NO.	TITLE	REVISION
01	COVER PAGE	1
02	STORMWATER MANAGEMENT PLAN	1
03	SEDIMENT AND EROSION CONTROL PLAN	1
04	SEDIMENT AND EROSION CONTROL NOTES - SHEET 01	1
05	SEDIMENT AND EROSION CONTROL NOTES - SHEET 02	1
06	SEDIMENT AND EROSION CONTROL NOTES - SHEET 03	1

**LONGREACH REGIONAL COUNCIL**

**DIGITALLY STAMPED  
APPROVED PLAN**

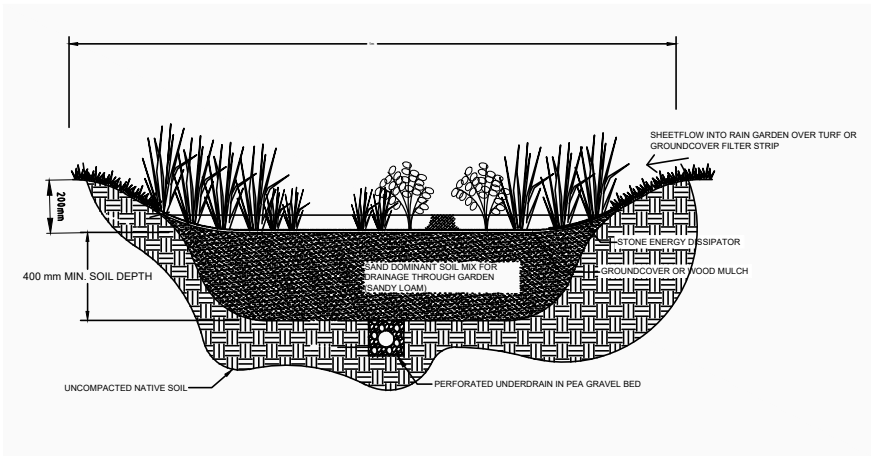
**Development Application:** Minor Change to Development Permit DA20/21-003 for Material Change of Use for a *Tourist Park* (150 caravan and camping sites)

**Property Description:** Lot 30 C22867, Lot 32 C22880 and Lot 11 on SP332287

Referred to in Council's Decision Notice

**Approval Date:** 13 July 2022

				SURVEY DATA		GBA ON BEHALF OF ANDREW SECCOMBE		COVER PAGE		PO Box 554 Beaudesert QLD 4285		<b>ACS Engineers</b> CIVIL   ENVIRONMENTAL   PROJECT MANAGEMENT																		
				DATUM GDA94		73 ELM ST, BARCALDINE, QLD 4725								(07) 5541 3500 www.acsengineers.com.au																
				MAP GRID MGA-55		THOMSON RIVER CARAVAN PARK		<table border="1" style="width: 100%; border-collapse: collapse;"> <thead> <tr> <th colspan="5">ENGINEERING CERTIFICATION (RPEQ)</th> </tr> <tr> <th>#</th> <th>FIELD</th> <th>NAME</th> <th>SIGNATURE</th> <th>DATE</th> </tr> </thead> <tbody> <tr> <td>13697</td> <td>CIVIL</td> <td>S.SHAY</td> <td></td> <td>02/11/20</td> </tr> </tbody> </table>		ENGINEERING CERTIFICATION (RPEQ)					#	FIELD	NAME	SIGNATURE	DATE	13697	CIVIL	S.SHAY		02/11/20	JOB NUMBER 200109		1		01 OF 06	
ENGINEERING CERTIFICATION (RPEQ)																														
#	FIELD	NAME	SIGNATURE	DATE																										
13697	CIVIL	S.SHAY		02/11/20																										
1		ISSUE FOR APPROVAL		SLS 02/11/20		SLS 11/2020		LANDSBOROUGH HIGHWAY, LONGREACH, QLD, 4730		DRAWING NUMBER ACS-200109-SWM-01																				
		REVISION/DETAILS		DWN DATE		DES DATE																								
<small>FILE: G:\SYNERGY\PROJECTS\20\200109 GBA - THOMSON RIVER CARAVAN PARK\DESIGN FILES\ACS-SWMP-200109.DWG PLOT TIME: 02/11/2020 - 6:18PM BY USER: DRAFTING</small>																														



Amended in red by Council  
08/07/22

**LONGREACH REGIONAL COUNCIL**

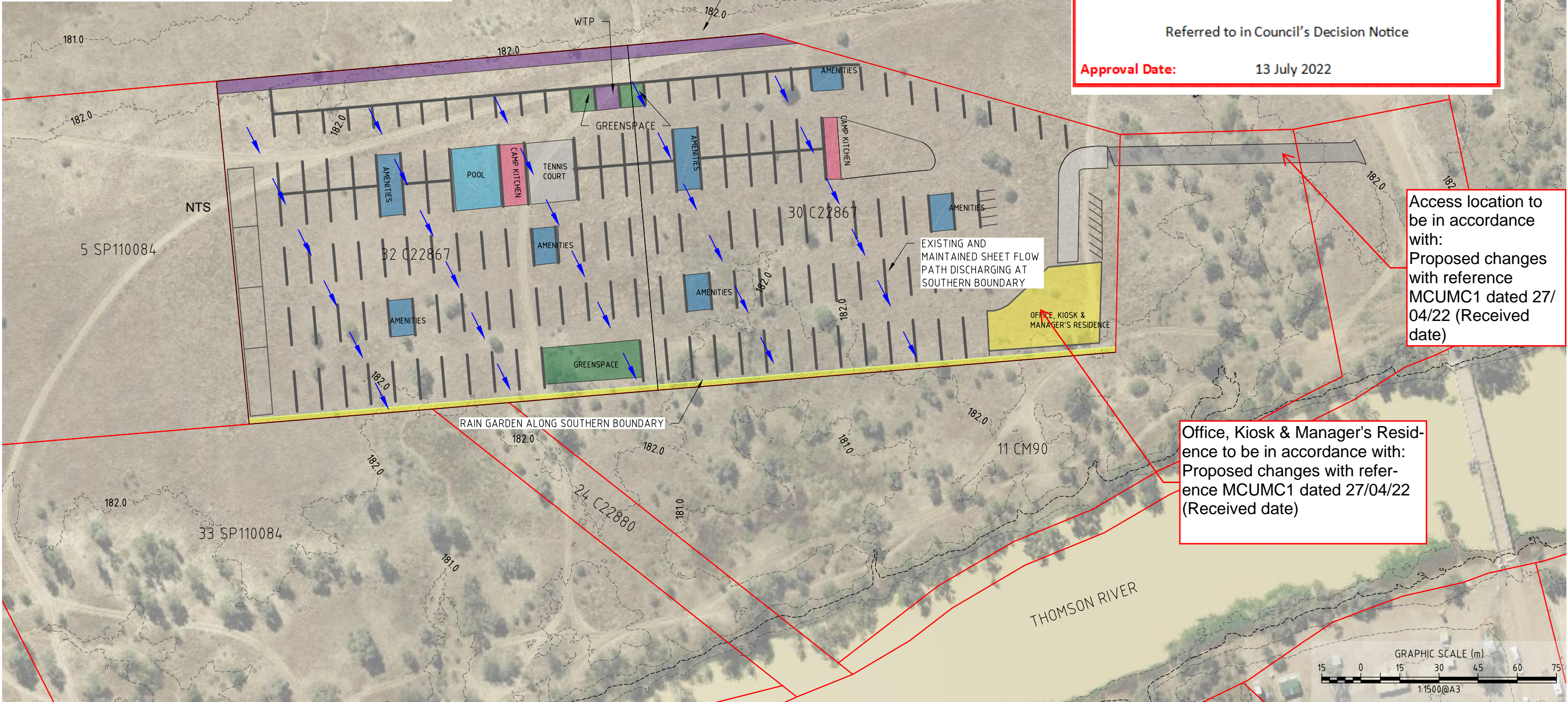
**DIGITALLY STAMPED  
APPROVED PLAN**

**Development Application:** Minor Change to Development Permit DA20/21-003 for Material Change of Use for a *Tourist Park* (150 caravan and camping sites)

**Property Description:** Lot 30 C22867, Lot 32 C22880 and Lot 11 on SP332287

Referred to in Council's Decision Notice

**Approval Date:** 13 July 2022



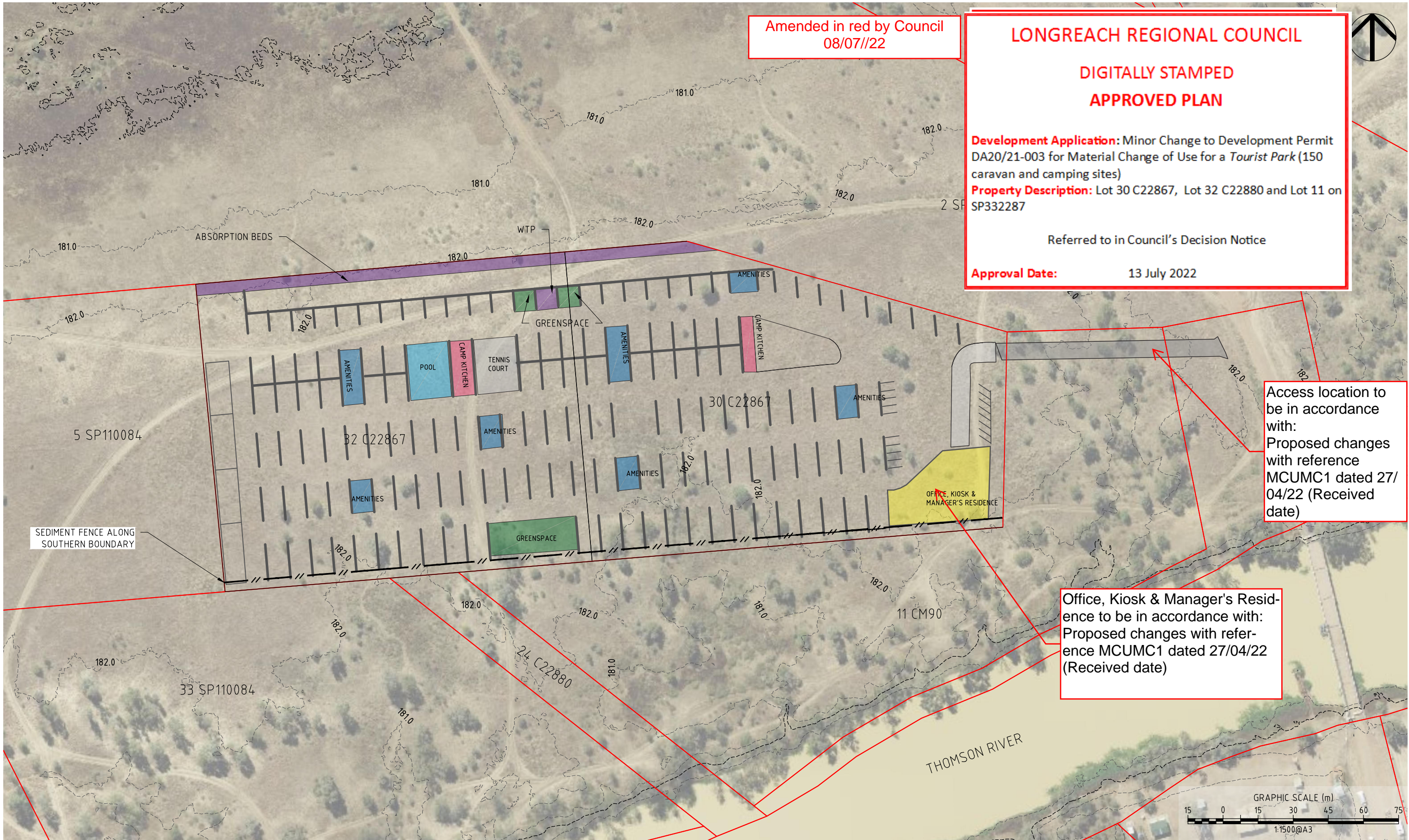
Access location to be in accordance with:  
Proposed changes with reference MCUMC1 dated 27/04/22 (Received date)

Office, Kiosk & Manager's Residence to be in accordance with:  
Proposed changes with reference MCUMC1 dated 27/04/22 (Received date)



		SURVEY DATA		GBA ON BEHALF OF ANDREW SECCOMBE		STORMWATER MANAGEMENT PLAN		PO Box 554 Beaudesert QLD 4285		<b>ACS Engineers</b> CIVIL   ENVIRONMENTAL   PROJECT MANAGEMENT	
		DATUM GDA94		73 ELM ST, BARCALDINE, QLD 4725				(07) 5541 3500 www.acsengineers.com.au			
		MAP GRID MGA-55		THOMSON RIVER CARAVAN PARK		ENGINEERING CERTIFICATION (RPEQ)		JOB NUMBER 200109		1	
		HEIGHT ORIGIN -		LANDSBOROUGH HIGHWAY, LONGREACH, QLD, 4730		# FIELD NAME SIGNATURE DATE		DRAWING NUMBER ACS-200109-SWM-02			
1		ISSUE FOR APPROVAL		SLS 02/11/20		SLS 11/2020		13697 CIVIL S.SHAY		06	
		REVISION/DETAILS		DWN		DATE					

FILE: G:\SYNERGY\PROJECTS\20\200109 GBA - THOMSON RIVER CARAVAN PARK\DESIGN FILES\ACS-SWMP-200109.DWG PLOT TIME: 02/11/2020 - 6:18PM BY USER: DRAFTING



Amended in red by Council  
08/07/22

**LONGREACH REGIONAL COUNCIL**  
**DIGITALLY STAMPED**  
**APPROVED PLAN**

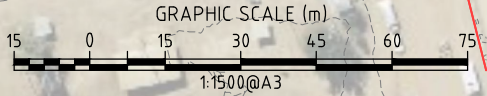
**Development Application:** Minor Change to Development Permit DA20/21-003 for Material Change of Use for a *Tourist Park* (150 caravan and camping sites)  
**Property Description:** Lot 30 C22867, Lot 32 C22880 and Lot 11 on SP332287

Referred to in Council's Decision Notice

**Approval Date:** 13 July 2022

Access location to be in accordance with:  
Proposed changes with reference MCUMC1 dated 27/04/22 (Received date)

Office, Kiosk & Manager's Residence to be in accordance with:  
Proposed changes with reference MCUMC1 dated 27/04/22 (Received date)



		SURVEY DATA		GBA ON BEHALF OF ANDREW SECCOMBE		SEDIMENT AND EROSION CONTROL PLAN		PO Box 554 Beaudesert QLD 4285		<b>ACS Engineers</b> CIVIL   ENVIRONMENTAL   PROJECT MANAGEMENT	
		DATUM GDA94		73 ELM ST, BARCALDINE, QLD 4725				(07) 5541 3500 www.acsengineers.com.au			
		MAP GRID MGA-55		THOMSON RIVER CARAVAN PARK				JOB NUMBER 200109		1 03 OF 06	
		HEIGHT ORIGIN -		LANDSBOROUGH HIGHWAY, LONGREACH, QLD, 4730				DRAWING NUMBER ACS-200109-SWM-03			
1 ISSUE FOR APPROVAL		SLS 02/11/20		SLS 11/2020		ENGINEERING CERTIFICATION (RPEQ)					
REVISION/DETAILS		DWN DATE		DES DATE		# FIELD NAME SIGNATURE DATE					
						13697 CIVIL S.SHAY [Signature] 02/11/20					
FILE: G:\SYNERGY\PROJECTS\20\200109 GBA - THOMSON RIVER CARAVAN PARK\DESIGN FILES\ACS-SWMP-200109.DWG PLOT TIME: 02/11/2020 - 6:18PM BY USER: DRAFTING											

**GENERAL**

- ADDITIONAL EROSION AND SEDIMENT CONTROL MEASURES MUST BE IMPLEMENTED AND A REVISED EROSION AND SEDIMENT CONTROL PLAN (ESCP) MUST BE SUBMITTED FOR APPROVAL IN THE EVENT THAT SITE CONDITIONS CHANGE SIGNIFICANTLY FROM THOSE CONSIDERED WITHIN THE ESCP.
- WHERE THERE IS A HIGH PROBABILITY THAT SERIOUS OR MATERIAL ENVIRONMENTAL HARM MAY OCCUR AS A RESULT OF SEDIMENT LEAVING THE SITE, APPROPRIATE ADDITIONAL EROSION AND SEDIMENT CONTROL MEASURES MUST BE IMPLEMENTED SUCH THAT ALL REASONABLE AND PRACTICABLE MEASURES ARE BEING TAKEN TO PREVENT OR MINIMISE SUCH HARM. ONLY THOSE WORKS NECESSARY TO MINIMISE OR PREVENT ENVIRONMENTAL HARM SHALL BE CONDUCTED ON-SITE PRIOR TO APPROVAL OF THE AMENDED EROSION AND SEDIMENT CONTROL PLAN (ESCP).
- IN CIRCUMSTANCES WHERE IT IS CONSIDERED NECESSARY TO PREPARE AN AMENDED EROSION AND SEDIMENT CONTROL PLAN (ESCP), AND WHERE THE DELIVERY OF SUCH AN AMENDED ESCP IS NOT IMMINENT, THEN ALL NECESSARY NEW OR MODIFIED EROSION AND SEDIMENT CONTROL WORKS MUST BE IN ACCORDANCE TO WITH IECA (2008) BEST PRACTICE EROSION & SEDIMENT CONTROL. UPON APPROVAL OF THE AMENDED ESCP, ALL WORKS MUST BE IMPLEMENTED IN ACCORDANCE WITH THE AMENDED PLAN.

**LAND CLEARING**

- LAND CLEARING MUST BE DELAYED AS LONG AS PRACTICABLE AND MUST BE UNDERTAKEN IN CONJUNCTION WITH DEVELOPMENT, UNLESS OTHERWISE APPROVED BY THE SUPERINTENDENT.
- ALL REASONABLE AND PRACTICABLE EFFORTS MUST BE TAKEN TO DELAY THE REMOVAL OF, OR DISTURBANCE TO, EXISTING GROUND COVER (ORGANIC OR INORGANIC) PRIOR TO LAND-DISTURBING ACTIVITIES.
- TREE CLEARING MUST OCCUR IN A MANNER THAT MINIMISES DISTURBANCE TO EXISTING GROUND COVER (ORGANIC OR INORGANIC).
- TREE CLEARING AND GRUBBING OF THE SITE MUST BE IMMEDIATELY FOLLOWED BY SPECIFIED TEMPORARY STABILISATION MEASURES (E.G. TEMPORARY GRASSING, OR MULCHING) PRIOR TO COMMENCEMENT OF EACH STAGE OF CONSTRUCTION WORKS.
- DISTURBANCE TO NATURAL WATERCOURSES (INCLUDING BED AND BANKS) AND THEIR ASSOCIATED RIPARIAN ZONES MUST BE LIMITED TO THE MINIMUM PRACTICABLE.
- NO LAND CLEARING SHALL BE UNDERTAKEN UNLESS PRECEDED BY THE INSTALLATION OF ADEQUATE DRAINAGE AND SEDIMENT CONTROL MEASURES, UNLESS SUCH CLEARING IS REQUIRED FOR THE PURPOSE OF INSTALLING SUCH MEASURES, IN WHICH CASE, ONLY THE MINIMUM CLEARING REQUIRED TO INSTALL SUCH MEASURES SHALL OCCUR.
- LAND CLEARING MUST BE LIMITED TO 5M FROM THE EDGE OF PROPOSED CONSTRUCTED WORKS, 2M OF ESSENTIAL CONSTRUCTION TRAFFIC ROUTES, AND A TOTAL OF 10M WIDTH FOR CONSTRUCTION ACCESS, UNLESS OTHERWISE APPROVED BY THE SUPERINTENDENT.
- PRIOR TO LAND CLEARING, AREAS OF PROTECTED VEGETATION, AND SIGNIFICANT AREAS OF RETAINED VEGETATION MUST BE CLEARLY IDENTIFIED (E.G. WITH HIGH-VISIBILITY TAPE, OR LIGHT FENCING) FOR THE PURPOSES OF MINIMISING THE RISK OF UNNECESSARY LAND CLEARING.
- ALL REASONABLE AND PRACTICABLE MEASURES MUST BE TAKEN TO MINIMISE THE REMOVAL OF, OR DISTURBANCE TO, THOSE TREES, SHRUBS AND GROUND COVERS (ORGANIC OR INORGANIC) THAT ARE INTENDED TO BE RETAINED.
- ALL LAND CLEARING MUST BE IN ACCORDANCE WITH THE FEDERAL, STATE AND LOCAL GOVERNMENT VEGETATION PROTECTION/PRESERVATION REQUIREMENTS AND/OR POLICIES.
- LAND CLEARING IS LIMITED TO THE MINIMUM PRACTICABLE DURING THOSE PERIODS WHEN SOIL EROSION DUE TO WIND, RAIN OR SURFACE WATER IS POSSIBLE.
- LAND CLEARING MUST NOT EXTEND BEYOND THAT NECESSARY TO PROVIDE UP TO EIGHT (8) WEEKS OF SITE ACTIVITY DURING THOSE MONTHS WHEN THE ACTUAL OR AVERAGE RAINFALL IS LESS THAN 45mm, SIX (6) IF BETWEEN 45 AND 100mm, FOUR (4) WEEKS IF BETWEEN 100 AND 225mm, AND TWO (2) WEEKS IF GREATER THAN 225mm.

**SITE ACCESS**

- PRIOR TO THE COMMENCEMENT OF SITE WORKS, THE LOCATION OF THE SITE ACCESS POINT(S) MUST BE VERIFIED WITH LONGREACH REGIONAL COUNCIL.
- SITE ACCESS IS RESTRICTED TO TWO LOCATIONS.
- SITE EXIT POINTS MUST BE APPROPRIATELY MANAGED TO MINIMISE THE RISK OF SEDIMENT BEING TRACKED ONTO SEALED, PUBLIC ROADWAYS.
- STORMWATER RUNOFF FROM ACCESS ROADS AND STABILISED ENTRY/EXIT POINTS MUST DRAIN TO AN APPROPRIATE SEDIMENT CONTROL DEVICE.

**SOIL AND STOCKPILE MANAGEMENT**

- ALL REASONABLE AND PRACTICABLE MEASURES MUST BE TAKEN TO OBTAIN THE MAXIMUM BENEFIT FROM EXISTING TOPSOIL, INCLUDING:
  - WHERE THE PROPOSED AREA OF SOIL DISTURBANCE DOES NOT EXCEED 2500m<sup>2</sup>, AND THE TOPSOIL DOES NOT CONTAIN UNDESIRABLE WEED SEED, THE TOP 100mm OF SOIL LOCATED WITHIN AREAS OF PROPOSED SOIL DISTURBANCE (INCLUDING STOCKPILE AREAS) MUST BE STRIPPED AND STOCKPILED SEPARATELY FROM THE REMAINING SOIL.
  - WHERE THE PROPOSED AREA OF SOIL DISTURBANCE EXCEEDS 2500m<sup>2</sup>, AND THE TOPSOIL DOES NOT CONTAIN UNDESIRABLE WEED SEED, THE TOP 50mm OF SOIL MUST BE STRIPPED AND STOCKPILED SEPARATELY FROM THE REMAINING TOPSOIL, AND SPREAD AS A FINAL SURFACE SOIL.
  - IN AREAS WHERE THE TOPSOIL CONTAINS UNDESIRABLE WEED SEED, THE AFFECTED SOIL MUST BE SUITABLY BURIED OR REMOVED FROM THE SITE.
- STOCKPILES OF ERODIBLE MATERIAL THAT HAS THE POTENTIAL TO CAUSE ENVIRONMENTAL HARM IF DISPLACED, MUST BE:
  - APPROPRIATELY PROTECTED FROM WIND, RAIN, CONCENTRATED SURFACE FLOW AND EXCESSIVE UP-SLOPE STORMWATER SURFACE FLOWS.
  - LOCATED AT LEAST 2m FROM ANY HAZARDOUS AREA, RETAINED VEGETATION, OR CONCENTRATED DRAINAGE LINE.
  - LOCATED UP-SLOPE OF AN APPROPRIATE SEDIMENT CONTROL SYSTEM.
  - PROVIDED WITH AN APPROPRIATE PROTECTIVE COVER (SYNTHETIC, MULCH OR VEGETATIVE) IF THE MATERIALS ARE LIKELY TO BE STOCKPILED FOR MORE THAN 28 DAYS.
  - PROVIDED WITH AN APPROPRIATE PROTECTIVE COVER (SYNTHETIC, MULCH OR VEGETATIVE) IF THE MATERIALS ARE LIKELY TO BE STOCKPILED FOR MORE THAN 10 DAYS DURING THOSE MONTHS THAT HAVE A HIGH EROSION RISK.
  - PROVIDED WITH AN APPROPRIATE PROTECTIVE COVER (SYNTHETIC, MULCH OR VEGETATIVE) IF THE MATERIALS ARE LIKELY TO BE STOCKPILED FOR MORE THAN 5 DAYS DURING THOSE MONTHS THAT HAVE A EXTREME EROSION RISK.
- A SUITABLE FLOW DIVERSION SYSTEM MUST BE ESTABLISHED IMMEDIATELY UP-SLOPE OF A STOCKPILE OF ERODIBLE MATERIAL THAT HAS THE POTENTIAL TO CAUSE ENVIRONMENTAL HARM IF DISPLACED, IF THE UP-SLOPE CATCHMENT AREA DRAINING TO THE STOCKPILE EXCEEDS 1500m<sup>2</sup>.

**SITE MANAGEMENT**

- ALL OFFICE FACILITIES AND OPERATIONAL ACTIVITIES MUST BE LOCATED SUCH THAT ANY LIQUID EFFLUENT (E.G. PROCESS WATER, WASH-DOWN WATER, EFFLUENT FROM EQUIPMENT CLEANING, OR PLANT WATERING), CAN BE TOTALLY CONTAINED AND TREATED WITHIN THE SITE.
- THE CONSTRUCTION SCHEDULE MUST AIM TO MINIMISE THE DURATION THAT ANY AND ALL AREAS OF SOIL ARE EXPOSED TO THE EROSION EFFECTS OF WIND, RAIN AND SURFACE WATER.

- LAND-DISTURBING ACTIVITIES MUST BE UNDERTAKEN IN ACCORDANCE WITH THE EROSION AND SEDIMENT CONTROL PLAN (ESCP) AND ASSOCIATED DEVELOPMENT CONDITIONS.
- LAND-DISTURBING ACTIVITIES MUST BE UNDERTAKEN IN SUCH A MANNER THAT ALLOWS ALL REASONABLE AND PRACTICABLE MEASURES TO BE UNDERTAKEN TO:
  - ALLOW STORMWATER TO PASS THROUGH THE SITE IN A CONTROLLED MANNER AND AT NON-EROSIVE FLOW VELOCITIES UP TO THE SPECIFIED DESIGN STORM DISCHARGE;
  - MINIMISE SOIL EROSION RESULTING FROM RAIN, WATER FLOW AND/OR WIND;
  - MINIMISE ADVERSE EFFECTS OF SEDIMENT RUNOFF, INCLUDING SAFETY ISSUES;
  - PREVENT, OR AT LEAST MINIMISE, ENVIRONMENTAL HARM RESULTING FROM WORK-RELATED SOIL EROSION AND SEDIMENT RUNOFF;
  - ENSURE THAT THE VALUE AND USE OF LAND/PROPERTIES ADJACENT TO THE DEVELOPMENT (INCLUDING ROADS) ARE NOT DIMINISHED AS A RESULT OF THE ADOPTED ESC MEASURES.
- ALL EROSION AND SEDIMENT CONTROL MEASURES MUST CONFORM TO THE STANDARDS AND SPECIFICATIONS CONTAINED IN:
  - THE DEVELOPMENT APPROVAL CONDITION ISSUED BY LRC; AND
  - THE APPROVED ESCP AND SUPPORTING DOCUMENTATION; OR
  - THE LATEST VERSION OF IECA (2008) BEST PRACTICE EROSION & SEDIMENT CONTROL IF THE STANDARDS AND SPECIFICATIONS ARE NOT CONTAINED IN THE APPROVED ESCP.
- ANY WORKS THAT MAY CAUSE SIGNIFICANT SOIL DISTURBANCE AND ARE ANCILLARY TO ANY ACTIVITY FOR WHICH REGULATORY BODY APPROVAL IS REQUIRED, MUST NOT COMMENCE BEFORE THE ISSUE OF THAT APPROVAL.
- ADDITIONAL AND/OR ALTERNATIVE ESC MEASURES MUST BE IMPLEMENTED IN THE EVENT THAT LRC IDENTIFIES THAT UNACCEPTABLE OFF-SITE SEDIMENTATION IS OCCURRING AS A RESULT OF THE WORK ACTIVITIES.
- LAND-DISTURBING ACTIVITIES MUST NOT CAUSE UNNECESSARY SOIL DISTURBANCE IF AN ALTERNATIVE CONSTRUCTION PROCESS IS AVAILABLE THAT ACHIEVES THE SAME OR EQUIVALENT OUTCOMES AT AN EQUIVALENT COST.
- SEDIMENT (INCLUDING CLAY, SILT, SAND, GRAVEL, SOIL, MUD, CEMENT AND CERAMIC WASTE) DEPOSITED OFF THE SITE AS A DIRECT RESULT OF AN ON-SITE ACTIVITY, MUST BE COLLECTED AND THE AREA APPROPRIATELY CLEANED/REHABILITATED AS SOON AS REASONABLE AND PRACTICABLE, AND IN A MANNER THAT GIVES APPROPRIATE CONSIDERATION TO THE SAFETY AND ENVIRONMENTAL RISKS ASSOCIATED WITH THE SEDIMENT DEPOSITION.
- ALL WASTE INCLUDING PETROLEUM AND OIL-BASED PRODUCTS, MUST BE PREVENTED FROM ENTERING AN INTERNAL WATER BODY, OR AN EXTERNAL DRAIN, STORMWATER SYSTEM, OR WATER BODY.
- ALL FLAMMABLE AND COMBUSTIBLE LIQUIDS, INCLUDING ALL LIQUID CHEMICALS IF SUCH CHEMICALS COULD POTENTIALLY BE WASHED OR DISCHARGED FROM THE SITE, ARE STORED AND HANDLED ON-SITE IN ACCORDANCE WITH RELEVANT STANDARDS SUCH AS AS1940 THE STORAGE AND HANDLING OF FLAMMABLE AND COMBUSTIBLE LIQUIDS.
- NO MORE THAN 150m OF A STORMWATER, SEWER LINE OR OTHER SERVICE TRENCH MUST TO BE OPEN AT ANY ONE TIME.
- SITE SPOIL MUST BE LAWFULLY DISPOSED OF IN A MANNER THAT DOES NOT RESULT IN ONGOING SOIL EROSION OR ENVIRONMENTAL HARM.
- ALL FILL MATERIAL PLACED ON SITE MUST COMPRISE ONLY NATURAL EARTH AND ROCK, AND IS TO BE FREE OF CONTAMINANTS, BE FREE DRAINING, AND BE COMPACTED IN LAYERS NOT EXCEEDING 300mm TO 90% MODIFIED MAXIMUM DRY DENSITY IN ACCORDANCE WITH AS1289.

**DRAINAGE CONTROL**

- ALL DRAINAGE CONTROL MEASURES MUST BE APPLIED AND MAINTAINED IN ACCORDANCE WITH THE CONSTRUCTION PLANS.
- WHEREVER REASONABLE AND PRACTICABLE, STORMWATER RUNOFF ENTERING THE SITE FROM EXTERNAL AREAS, AND NON-SEDIMENT LADEN (CLEAN) STORMWATER RUNOFF ENTERING A WORK AREA OR AREA OF SOIL DISTURBANCE, MUST BE DIVERTED AROUND OR THROUGH THAT AREA IN A MANNER THAT MINIMISES SOIL EROSION AND THE CONTAMINATION OF THAT WATER FOR ALL DISCHARGES UP TO THE SPECIFIED DESIGN STORM DISCHARGE.
- DURING THE CONSTRUCTION PERIOD, ALL REASONABLE AND PRACTICABLE MEASURES MUST BE IMPLEMENTED TO CONTROL FLOW VELOCITIES IN SUCH A MANNER THAN PREVENTS SOIL EROSION ALONG DRAINAGE PATHS AND AT THE ENTRANCE AND EXIT OF ALL DRAINS AND DRAINAGE PIPES DURING ALL STORMS UP TO THE RELEVANT DESIGN STORM DISCHARGE.
- TO THE MAXIMUM DEGREE REASONABLE AND PRACTICABLE, ALL WATERS DISCHARGED DURING THE CONSTRUCTION PHASE MUST DISCHARGE ONTO STABLE LAND, IN A NON-EROSIVE MANNER, AND AT A LEGAL POINT OF DISCHARGE.
- WHEREVER REASONABLE AND PRACTICABLE, "CLEAN" SURFACE WATERS MUST BE DIVERTED AWAY FROM SEDIMENT CONTROL DEVICES AND ANY UNTREATED, SEDIMENT-LADEN WATERS.
- DURING THE CONSTRUCTION PERIOD, ROOF WATER MUST BE MANAGED IN A MANNER THAT MINIMISES SOIL EROSION THROUGHOUT THE SITE, AND SITE WETNESS WITHIN ACTIVE WORK AREAS.

**EROSION CONTROL**

- ALL EROSION CONTROL MEASURES MUST BE APPLIED AND MAINTAINED IN ACCORDANCE WITH IECA (2008) BEST PRACTICE EROSION & SEDIMENT CONTROL.
- THE APPLICATION OF LIQUID-BASED DUST SUPPRESSION MEASURES MUST ENSURE THAT SEDIMENT-LADEN RUNOFF RESULTING FROM SUCH MEASURES DOES NOT CREATE A TRAFFIC OR ENVIRONMENTAL HAZARD.
- ALL TEMPORARY EARTH BANKS, FLOW DIVERSION SYSTEMS, AND EMBANKMENTS ASSOCIATED WITH CONSTRUCTED SEDIMENT BASINS MUST BE MACHINE-COMPACTED, SEEDED AND MULCHED FOR THE PURPOSE OF ESTABLISHING A TEMPORARY VEGETATIVE COVER WITHIN 10 DAYS AFTER GRADING.
- UNPROTECTED SLOPE LENGTHS MUST NOT EXCEED 80m, OR AN EQUIVALENT VERTICAL FALL OF 3m DURING THE CONSTRUCTION PERIOD.
- THE CONSTRUCTION AND STABILISATION OF EARTH BATTERS STEEPER THAN 6:1 (H:V) MUST BE STAGED SUCH THAT NO MORE THAN 3 VERTICAL-METRES OF ANY BATTER IS EXPOSED TO RAINFALL AT ANY INSTANT.
- SYNTHETIC REINFORCED EROSION CONTROL MATS AND BLANKETS MUST NOT BE PLACED WITHIN, OR ADJACENT TO, RIPARIAN ZONES AND WATERCOURSES IF SUCH MATERIALS ARE LIKELY TO CAUSE ENVIRONMENTAL HARM TO WILDLIFE OR WILDLIFE HABITATS.
- A MINIMUM 60% GROUND COVER MUST BE ACHIEVED ON ALL NON-COMPLETED EARTHWORKS EXPOSED TO ACCELERATED SOIL EROSION IF FURTHER CONSTRUCTION ACTIVITIES OR SOIL DISTURBANCES ARE LIKELY TO BE SUSPENDED FOR MORE THAN 30 DAYS DURING THOSE MONTHS WHEN THE EXPECTED RAINFALL IS LESS THAN 30mm; MINIMUM 70% COVER WITHIN 30 DAYS IF BETWEEN 30 AND 45mm; MINIMUM 70% COVER WITHIN 20 DAYS IF BETWEEN 45 AND 100mm; MINIMUM 75% COVER WITHIN 10 DAYS IF BETWEEN 100 AND 225mm; AND MINIMUM 80% COVER WITHIN 5

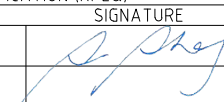
**LONGREACH REGIONAL COUNCIL**

**DIGITALLY STAMPED  
APPROVED PLAN**

**Development Application:** Minor Change to Development Permit DA20/21-003 for Material Change of Use for a *Tourist Park* (150 caravan and camping sites)  
**Property Description:** Lot 30 C22867, Lot 32 C22880 and Lot 11 on SP332287

Referred to in Council's Decision Notice

**Approval Date:** 13 July 2022

				SURVEY DATA		GBA ON BEHALF OF ANDREW SECCOMBE		SEDIMENT AND EROSION CONTROL NOTES				
				DATUM		73 ELM ST, BARCALDINE, QLD 4725		SHEET 01				
				GDA94								
				MAP GRID								
				MGA-55								
				HEIGHT ORIGIN		THOMSON RIVER CARAVAN PARK		ENGINEERING CERTIFICATION (RPEQ)				
				-				#	FIELD	NAME	SIGNATURE	DATE
				SURVEY BOOKS				13697	CIVIL	S.SHAY		02/
				-								
1	ISSUE FOR APPROVAL	SLS	02/11/20	SLS	11/2020	LANDSBOROUGH HIGHWAY, LONGREACH, QLD, 4730						
		REVISION/DETAILS		DWN		DATE		DES		DATE		

**SEDIMENT CONTROL**

1. ALL SEDIMENT CONTROL MEASURES MUST BE APPLIED AND MAINTAINED IN ACCORDANCE WITH IECA (2008) BEST PRACTICE EROSION & SEDIMENT CONTROL.
2. OPTIMUM BENEFIT MUST BE MADE OF EVERY OPPORTUNITY TO TRAP SEDIMENT WITHIN THE WORK SITE, AND AS CLOSE AS PRACTICABLE TO ITS SOURCE.
3. SEDIMENT TRAPS MUST BE INSTALLED AND OPERATED TO BOTH COLLECT AND RETAIN SEDIMENT.
4. THE POTENTIAL SAFETY RISK OF A PROPOSED SEDIMENT TRAP TO SITE WORKERS AND THE PUBLIC MUST BE GIVEN APPROPRIATE CONSIDERATION, ESPECIALLY THOSE DEVICES LOCATED WITHIN PUBLICLY ACCESSIBLE AREAS.
5. ALL REASONABLE AND PRACTICABLE MEASURES MUST BE TAKEN TO PREVENT, OR AT LEAST MINIMISE, THE RELEASE OF SEDIMENT FROM THE SITE.
6. SUITABLE ALL-WEATHER MAINTENANCE ACCESS MUST BE PROVIDED TO ALL SEDIMENT CONTROL DEVICES.
7. SEDIMENT CONTROL DEVICES MUST BE DE-SILTED AND MADE FULLY OPERATIONAL AS SOON AS REASONABLE AND PRACTICABLE AFTER A SEDIMENT-PRODUCING EVENT, WHETHER NATURAL OR ARTIFICIAL, IF THE DEVICE'S SEDIMENT RETENTION CAPACITY FALLS BELOW 70% OF ITS DESIGN RETENTION CAPACITY.
8. MATERIALS, WHETHER LIQUID OR SOLID, REMOVED FROM SEDIMENT CONTROL DEVICES DURING MAINTENANCE OR DECOMMISSIONING, MUST BE DISPOSED OF IN A MANNER THAT DOES NOT CAUSE ONGOING SOIL EROSION OR ENVIRONMENTAL HARM.

**SITE REHABILITATION**

1. ALL DISTURBED AREAS IDENTIFIED AS VERY LOW, LOW, MEDIUM, HIGH, OR EXTREME EROSION RISK MUST BE SUITABLY STABILISED WITHIN 30, 30, 20, 10 OR 5 DAYS RESPECTIVELY, OR PRIOR TO ANTICIPATED RAINFALL, WHICHEVER IS THE GREATER, FROM THE DAY THAT SOIL DISTURBANCES ON THE AREA HAVE BEEN FINALISED.
2. A MINIMUM 60% GROUND COVER MUST BE ACHIEVED ON ALL COMPLETED EARTHWORKS EXPOSED TO ACCELERATED SOIL EROSION WITHIN 30 DAYS DURING THOSE MONTHS WHEN THE EXPECTED RAINFALL IS LESS THAN 30mm; MINIMUM 70% COVER WITHIN 30 DAYS IF BETWEEN 30 AND 45mm; MINIMUM 70% COVER WITHIN 20 DAYS IF BETWEEN 45 AND 100mm; MINIMUM 75% COVER WITHIN 10 DAYS IF BETWEEN 100 AND 225mm; AND MINIMUM 80% COVER WITHIN 5 DAYS IF GREATER THAN 225mm. (ALTERNATIVE TO ABOVE)
3. NO COMPLETED EARTHWORK SURFACE MUST REMAIN DENUDED FOR LONGER THAN 60 DAYS.
4. THE TYPE OF GROUND COVER APPLIED TO COMPLETED EARTHWORKS IS COMPATIBLE WITH THE ANTICIPATED LONG-TERM LAND USE, ENVIRONMENTAL RISK, AND SITE REHABILITATION MEASURES.
5. UNLESS OTHERWISE DIRECTED BY THE SUPERINTENDENT OR WHERE DIRECTED BY THE APPROVED REVEGETATION PLAN, TOPSOIL MUST BE PLACED AT A MINIMUM DEPTH OF 75mm ON SLOPES 4:1 (H:V) OR FLATTER, AND 50mm ON SLOPES STEEPER THAN 4:1.
6. SOIL AMELIORANTS MUST BE ADDED TO THE SOIL IN ACCORDANCE WITH THE APPROVED LANDSCAPE/REVEGETATION PLANS AND/OR SOIL ANALYSIS.
7. TEMPORARY SITE STABILISATION PROCEDURES MUST COMMENCE AT LEAST 30 DAYS PRIOR TO THE NOMINATED SITE SHUTDOWN DATE. AT LEAST 70% STABLE COVER OF ALL UNSTABLE AND/OR DISTURBED SOIL SURFACES MUST BE ACHIEVED PRIOR TO ANY SHUTDOWN. THE STABILISATION WORKS MUST NOT RELY UPON THE LONGEVITY OF NON-VEGETATED EROSION CONTROL BLANKETS, OR TEMPORARY SOIL BINDERS.
8. ALL UNSTABLE OR DISTURBED SOIL SURFACES MUST BE ADEQUATELY STABILISED AGAINST EROSION (MINIMUM 70%) PRIOR TO COMMENCEMENT OF USE DEFECT PERIOD.

**SITE MONITORING**

1. ALL WATER QUALITY DATA, INCLUDING DATES OF RAINFALL, DATES OF TESTING, TESTING RESULTS AND DATES OF WATER RELEASE, MUST BE KEPT IN AN ON-SITE REGISTER. THE REGISTER IS TO BE MAINTAINED UP TO DATE FOR THE DURATION OF THE APPROVED WORKS AND BE AVAILABLE ON-SITE FOR INSPECTION BY LONGREACH REGIONAL COUNCIL ON REQUEST.
2. AT NOMINATED INSTREAM WATER MONITORING SITES, A MINIMUM OF 3 WATER SAMPLES MUST BE TAKEN AND ANALYSED, AND THE AVERAGE RESULT USED TO DETERMINE QUALITY.
3. SEDIMENT BASIN WATER QUALITY SAMPLES MUST BE TAKEN AT A DEPTH NO GREATER THAN 200MM ABOVE THE LEVEL OF SETTLED SEDIMENT.
4. ALL ENVIRONMENTALLY RELEVANT INCIDENTS MUST BE RECORDED IN A FIELD LOG THAT MUST REMAIN ACCESSIBLE TO ALL RELEVANT REGULATORY AUTHORITIES.

**SITE MAINTENANCE**

1. ALL EROSION AND SEDIMENT CONTROL MEASURES, INCLUDING DRAINAGE CONTROL MEASURES, MUST BE MAINTAINED IN PROPER WORKING ORDER AT ALL TIMES DURING THEIR OPERATIONAL LIVES.
2. ALL TEMPORARY EROSION AND SEDIMENT CONTROL MEASURES, INCLUDING DRAINAGE CONTROL MEASURES, MUST BE FULLY OPERATIONAL AND MAINTAINED IN PROPER WORKING ORDER AT ALL TIMES DURING THE MAINTENANCE PERIOD AS SPECIFIED BY LRC.
3. ALL TEMPORARY EROSION AND SEDIMENT CONTROL MEASURES, INCLUDING DRAINAGE CONTROL MEASURES, MUST BE REMOVED AFTER ACHIEVING A SATISFACTORY "OFF-MAINTENANCE INSPECTION" BY LRC.
4. ALL DRAINAGE, EROSION AND SEDIMENT CONTROL MEASURES MUST BE INSPECTED:
  - (i) AT LEAST DAILY (WHEN WORK IS OCCURRING ON-SITE);
  - (ii) AT LEAST WEEKLY (WHEN WORK IS NOT OCCURRING ON-SITE);
  - (iii) WITHIN 24 HOURS OF EXPECTED RAINFALL; AND
  - (iv) WITHIN 18 HOURS OF A RAINFALL EVENT OF SUFFICIENT INTENSITY AND DURATION TO CAUSE RUNOFF ON-SITE).
5. MAINTENANCE IS TO OCCUR ON ALL EROSION AND SEDIMENT CONTROL MEASURES WHEN CAPACITY REDUCES BY 30 %.
6. WASHING/FLUSHING OF SEALED ROADWAYS MUST ONLY OCCUR WHERE SWEEPING HAS FAILED TO REMOVE SUFFICIENT SEDIMENT AND THERE IS A COMPELLING NEED TO REMOVE THE REMAINING SEDIMENT (E.G. FOR SAFETY REASONS). IN SUCH CIRCUMSTANCES, ALL REASONABLE AND PRACTICABLE SEDIMENT CONTROL MEASURES MUST BE USED TO PREVENT, OR AT LEAST MINIMISE, THE RELEASE OF SEDIMENT INTO RECEIVING WATERS. ONLY THOSE MEASURES THAT WILL NOT CAUSE SAFETY AND PROPERTY FLOODING ISSUES SHALL BE EMPLOYED. SEDIMENT REMOVED FROM ROADWAYS MUST BE DISPOSED OF IN A LAWFUL MANNER THAT DOES NOT CAUSE ONGOING SOIL EROSION OR ENVIRONMENTAL HARM.

7. SEDIMENT REMOVED FROM SEDIMENT TRAPS AND PLACES OF SEDIMENT DEPOSITION MUST BE DISPOSED OF IN A LAWFUL MANNER THAT DOES NOT CAUSE ONGOING SOIL EROSION OR ENVIRONMENTAL HARM.
8. MAINTENANCE MOWING OF ALL ROAD SHOULDERS, TABLE DRAINS, BATTERS AND OTHER SURFACES LIKELY TO EXPERIENCE ACCELERATED SOIL EROSION MUST AIM TO LEAVE THE GRASS LENGTH NO SHORTER THAN 50mm WHERE REASONABLE AND PRACTICABLE.
9. MAINTENANCE MOWING MUST BE DONE IN A MANNER THAT WILL NOT DAMAGE THE PROFILE OF FORMED, SOFT EDGES, SUCH AS THE CREST OF EARTH EMBANKMENTS.
10. MAINTENANCE OF THE HYDRAULIC CAPACITY OF WATER DIVERSION DRAINS IS TO OCCUR BY CUTTING AND TRIMMING TO ENSURE GRASS LENGTH IS NO SHORTER THAN 50 MM WHERE POSSIBLE.
11. ENSURE RECORDS ARE KEPT OF DATES OF MAINTENANCE AND THE PERSONNEL RESPONSIBLE FOR UNDERTAKING THE MAINTENANCE.
12. IT IS THE CONTRACTORS RESPONSIBILITY TO ENSURE SOIL EROSION IS LIMITED AS MUCH AS POSSIBLE. THE TECHNIQUES USED IN THE DESIGN SHOULD NOT BE TAKEN AS THE MAXIMUM CONTROLS ALLOWABLE, AND THE CONTRACTOR MAY ADD CONTROLS AS NECESSARY TO LIMIT SOIL EROSION AND SEDIMENTATION.
13. MONITORING SHALL BE UNDERTAKEN BY A PERSON WITH EXPERIENCE IN EROSION AND SEDIMENT CONTROL MONITORING. MONITORING IS TO BE UNDERTAKEN IN A MANNER WHICH COMPLIES WITH IECA GUIDELINES 2008, CHAPTER 7. SITE INSPECTION.

**OTHER**

1. THE CONTRACTOR IS TO TAKE ALL NECESSARY PRECAUTIONS TO CONTROL EROSION AND DOWNSTREAM SEDIMENTATION DURING ALL STAGES OF CONSTRUCTION INCLUDING THE MAINTENANCE PERIOD.
2. ALL SEDIMENT CONTROL DEVICES SHALL BE MONITORED, CLEANED AND/OR REPAIRED WHENEVER THE ACCUMULATED SEDIMENT REDUCES THE CAPACITY BY 30%.
3. THE EXTENT OF GRASSING SHALL BE DETERMINED BY THE SUPERINTENDENT AND SHALL BE SEEDED, AS SPECIFIED, WITHIN SEVEN DAYS OF FINAL TRIMMING.
4. EXTENT AND POSITION OF SILT FENCE CONTROL MEASURES TO BE DETERMINED ON SITE BY SUPERINTENDENT.
5. MEASURES SHOWN ON THIS DRAWING ARE MINIMUM REQUIREMENTS ONLY.
6. SCOUR PROTECTION AND SILT MANAGEMENT MEASURES TO BE PROVIDED AT STORMWATER OUTLET HEADWALLS.
7. PROVISION TO BE MADE FOR DIRT/SAND REMOVAL FROM CONSTRUCTION VEHICLES PRIOR TO TRAVEL ON PUBLIC ROADS. METHOD TO BE APPROVED BY SUPERINTENDENT PRIOR TO COMMENCEMENT OF WORK.
8. ANY SILT OR SEDIMENT CAUSED BY CONSTRUCTION TRAFFIC ON EXISTING ROADS IS TO BE REMOVED DAILY.
9. THE CONTRACTOR SHALL IMPLEMENT EROSION AND SEDIMENT CONTROL PROCEDURES DURING CONSTRUCTION AND MAINTENANCE STAGES OF THE DEVELOPMENT AND SHALL TAKE ALL NECESSARY ACTIONS TO COMPLY WITH THE POLICY OBJECTIVES OF QLD STATE PLANNING POLICY.
10. A SCHEDULE SHALL BE SUBMITTED FOR THE APPROVAL OF COUNCIL'S REPRESENTATIVE AT THE PRE-START MEETING FOR THE FIELD IMPLEMENTATION OF EROSION AND SEDIMENT CONTROL, DETAILING THE STAGES AT WHICH VARIOUS MANAGEMENT TECHNIQUES WOULD BE IN PLACE AND AUDITING PROCEDURES.
11. FINAL FORM OF SEDIMENT EROSION CONTROL TO BE DECIDED ON SITE BY THE SUPERINTENDENT.
12. THE CONTRACTOR IS TO ENSURE THAT NO SILT REACHES THE DOWNSTREAM WATER COURSE AND IS TO PROVIDE ADEQUATE PROTECTION TO PREVENT THIS OCCURRING.

**LONGREACH REGIONAL COUNCIL**

**DIGITALLY STAMPED**


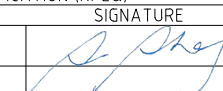
**APPROVED PLAN**

**Development Application: Minor Change to Development Permit DA20/21-003 for Material Change of Use for a Tourist Park (150 caravan and camping sites)**

**Property Description: Lot 30 C22867, Lot 32 C22880 and Lot 11 on SP332287**

**Referred to in Council's Decision Notice**

**Approval Date: 13 July 2022**

				SURVEY DATA		GBA ON BEHALF OF ANDREW SECCOMBE		SEDIMENT AND EROSION CONTROL NOTES - SHEET 02		PO Box 554 Beaudesert QLD 4285		 <p><b>ACS Engineers</b> CIVIL   ENVIRONMENTAL   PROJECT MANAGEMENT</p>	
				DATUM GDA94		73 ELM ST, BARCALDINE, QLD 4725				(07) 5541 3500 www.acsengineers.com.au			
				MAP GRID MGA-55						JOB NUMBER			
				HEIGHT ORIGIN -		THOMSON RIVER CARAVAN PARK		ENGINEERING CERTIFICATION (RPEQ)		200109			
				SURVEY BOOKS -				# FIELD NAME SIGNATURE DATE					
1		ISSUE FOR APPROVAL		SLS 02/11/20		LANDSBOROUGH HIGHWAY, LONGREACH, QLD, 4730		13697 CIVIL S.SHAY  02/11/20		DRAWING NUMBER		05	
		REVISION/DETAILS		DWN DATE						ACS-200109-SWM-05		06	
<small>FILE: G:\SYNERGY\PROJECTS\20\200109 GBA - THOMSON RIVER CARAVAN PARK\DESIGN FILES\ACS-SWMP-200109.DWG PLOT TIME: 02/11/2020 - 6:18PM BY USER: DRAFTING</small>													



**DEVICE NOTES**

**SEDIMENT FENCE**

1. FABRIC; POLYPROPYLENE, POLYAMIDE, NYLON, POLYESTER, OR POLYETHYLENE WOVEN OR NON-WOVEN FABRIC, AT LEAST 700mm IN WIDTH AND A MINIMUM UNIT WEIGHT OF 140GSM. ALL FABRICS TO CONTAIN ULTRAVIOLET INHIBITORS AND STABILISERS TO PROVIDE A MINIMUM OF 6 MONTHS OF USEABLE CONSTRUCTION LIFE (ULTRAVIOLET STABILITY EXCEEDING 70%).
2. FABRIC REINFORCEMENT: WIRE OR STEEL MESH MINIMUM 14-GAUGE WITH A MAXIMUM MESH SPACING OF 200mm.
3. SUPPORT POSTS/STAKES: 1500mm2 (MIN) HARDWOOD, 2500mm2 (MIN) SOFTWOOD, OR 1.5kg/m (MIN) STEEL STAR PICKETS SUITABLE FOR ATTACHING FABRIC.

**INSTALLATION**

1. REFER TO APPROVED PLANS FOR LOCATION, EXTENT, AND REQUIRED TYPE OF FABRIC (IF SPECIFIED). IF THERE ARE QUESTIONS OR PROBLEMS WITH THE LOCATION, EXTENT, FABRIC TYPE, OR METHOD OF INSTALLATION CONTACT THE ENGINEER OR RESPONSIBLE ON-SITE OFFICER FOR ASSISTANCE.
2. TO THE MAXIMUM DEGREE PRACTICAL, AND WHERE THE PLANS ALLOW, ENSURE THE FENCE IS LOCATED:
  - 2.1. TOTALLY WITHIN THE PROPERTY BOUNDARIES;
  - 2.2. ALONG A LINE OF CONSTANT ELEVATION WHEREVER PRACTICAL;
  - 2.3. AT LEAST 2m FROM THE TOE OF ANY FILLING OPERATIONS THAT MAY RESULT IN SHIFTING SOIL/FILL DAMAGING THE FENCE.
3. INSTALL RETURNS WITHIN THE FENCE AT MAXIMUM 20m INTERVALS IF THE FENCE IS INSTALLED ALONG THE CONTOUR, OR 5 TO 10m MAXIMUM SPACING (DEPENDENT ON SLOPE) IF THE FENCE IS INSTALLED AT AN ANGLE TO THE CONTOUR. THE 'RETURNS' SHALL CONSIST OF EITHER:
  - 3.1. V-SHAPED SECTION EXTENDING AT LEAST 1.5m UP THE SLOPE; OR
  - 3.2. SANDBAG OR ROCK/AGGREGATE CHECK DAM A MINIMUM 1/3 AND MAXIMUM 1/2 FENCE HEIGHT, AND EXTENDING AT LEAST 1.5m UP THE SLOPE.
4. ENSURE THE EXTREME ENDS OF THE FENCE ARE TURNED UP THE SLOPE AT LEAST 1.5m, OR AS NECESSARY, TO MINIMISE WATER BYPASSING AROUND THE FENCE.
5. ENSURE THE SEDIMENT FENCE IS INSTALLED IN A MANNER THAT AVOIDS THE CONCENTRATION OF FLOW ALONG THE FENCE, AND THE UNDESIRABLE DISCHARGE OF WATER AROUND THE ENDS OF THE FENCE.
6. IF THE SEDIMENT FENCE IS TO BE INSTALLED ALONG THE EDGE OF EXISTING TREES, ENSURE CARE IS TAKEN TO PROTECT THE TREES AND THEIR ROOT SYSTEMS DURING INSTALLATION OF THE FENCE. DO NOT ATTACH THE FABRIC TO THE TREES.
7. UNLESS DIRECTED BY THE SITE SUPERVISOR OR THE APPROVED PLANS, EXCAVATE A 200mm WIDE BY 200mm DEEP TRENCH ALONG THE PROPOSED FENCE LINE, PLACING THE EXCAVATED MATERIAL ON THE UP-SLOPE SIDE OF THE TRENCH.
8. ALONG THE LOWER SIDE OF THE TRENCH, APPROPRIATELY SECURE THE STAKES INTO THE GROUND SPACED NO GREATER THAN 3m IF SUPPORTED BY A TOP SUPPORT WIRE OR WEIR MESH BACKING, OTHERWISE NO GREATER THAN 2m.
9. IF SPECIFIED, SECURELY ATTACH THE SUPPORT WIRE OR MESH TO THE UP-SLOPE SIDE OF THE STAKES WITH THE MESH EXTENDING AT LEAST 200mm INTO THE EXCAVATED TRENCH. ENSURE THE MESH AND FABRIC IS ATTACHED TO THE UP-SLOPE SIDE OF THE STAKES EVEN WHEN DIRECTING A FENCE AROUND A CORNER OR SHARP CHANGE OF DIRECTION.
10. WHEREVER POSSIBLE, CONSTRUCT THE SEDIMENT FENCE FROM A CONTINUOUS ROLL OF FABRIC. TO JOIN FABRIC EITHER:
  - 10.1. ATTACH EACH END TO TWO OVERLAPPING STAKES WITH THE FABRIC FOLDING AROUND THE ASSOCIATED STAKE ONE TURN, AND WITH THE TWO STAKES TIED TOGETHER WITH WIRE; OR
  - 10.2. OVERLAP THE FABRIC TO THE NEXT ADJACENT SUPPORT POST.
11. SECURELY ATTACH THE FABRIC TO THE SUPPORT POSTS USING 25 X 12.5mm STAPLES, OR TIE WIRE AT MAXIMUM 150mm SPACING.
12. SECURELY ATTACH THE FABRIC TO THE SUPPORT WIRE/MESH (IF ANY) AT A MAXIMUM SPACING OF 1m.
13. ENSURE THE COMPLETED SEDIMENT FENCE IS AT LEAST 450mm, BUT NOT MORE THAN 700mm HIGH. IF A SPILL-THROUGH WEIR IS INSTALLED, ENSURE THE CREST OF THE WEIR IS AT LEAST 300mm ABOVE GROUND LEVEL.
14. BACKFILL THE TRENCH AND TAMP THE FILL TO FIRMLY ANCHOR THE BOTTOM OF THE FABRIC AND MESH TO PREVENT WATER FROM FLOWING UNDER THE FENCE.

**MAINTANENCE**

1. INSPECT THE SEDIMENT FENCE AT LEAST WEEKLY AND AFTER ANY SIGNIFICANT RAIN. MAKE NECESSARY REPAIRS IMMEDIATELY.
2. REPAIR ANY TORN SECTIONS WITH A CONTINUOUS PIECE OF FABRIC FROM POST TO POST.
3. WHEN MAKING REPAIRS, ALWAYS RESTORE THE SYSTEM TO ITS ORIGINAL CONFIGURATION UNLESS AN AMENDED LAYOUT IS REQUIRED OR SPECIFIED.
4. IF THE FENCE IS SAGGING BETWEEN STAKES, INSTALL ADDITIONAL SUPPORT POSTS.
5. REMOVE ACCUMULATED SEDIMENT IF THE SEDIMENT DEPOSIT EXCEEDS A DEPTH OF 1/3 THE HEIGHT OF THE FENCE.
6. DISPOSE OF SEDIMENT IN A SUITABLE MANNER THAT WILL NOT CAUSE AN EROSION OR POLLUTION HAZARD.
7. REPLACE THE FABRIC IF THE SERVICE LIFE OF THE EXISTING FABRIC EXCEEDS 6 MONTHS.

**REMOVAL**

1. WHEN DISTURBED AREAS UP-SLOPE OF THE SEDIMENT FENCE ARE SUFFICIENTLY STABILISED TO RESTRAIN EROSION, THE FENCE MUST BE REMOVED.
2. REMOVE MATERIALS AND COLLECTED SEDIMENT AND DISPOSE OF IN A SUITABLE MANNER THAT WILL NOT CAUSE AN EROSION OR POLLUTION HAZARD.
3. REHABILITATE/REVEGETATE THE DISTURBED GROUND AS NECESSARY TO MINIMISE THE EROSION HAZARD.

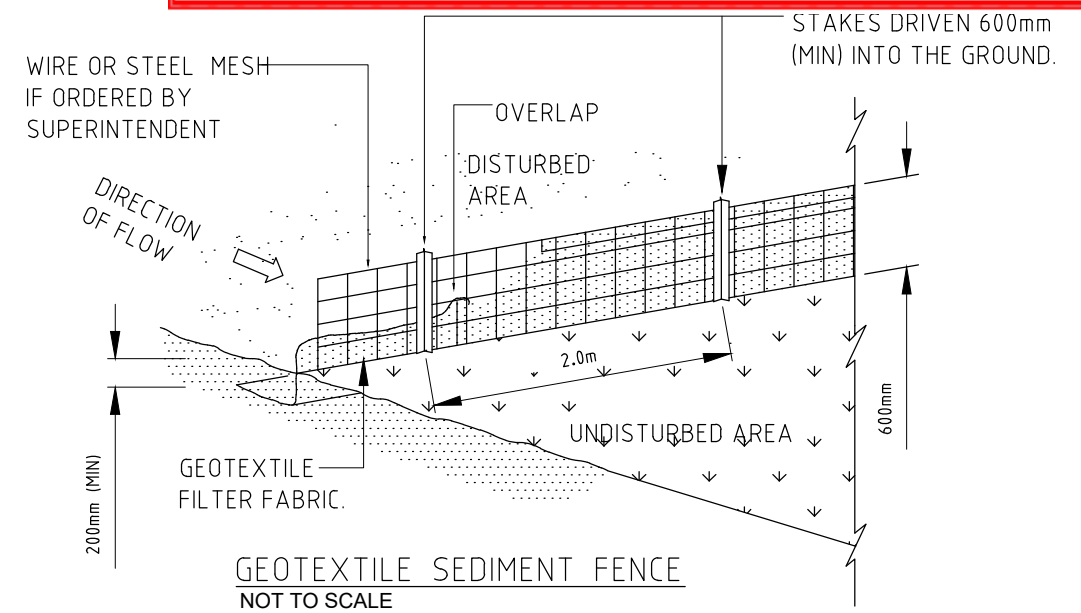
**LONGREACH REGIONAL COUNCIL**

**DIGITALLY STAMPED  
APPROVED PLAN**

**Development Application:** Minor Change to Development Permit DA20/21-003 for Material Change of Use for a *Tourist Park* (150 caravan and camping sites)  
**Property Description:** Lot 30 C22867, Lot 32 C22880 and Lot 11 on SP332287

Referred to in Council's Decision Notice

**Approval Date:** 13 July 2022



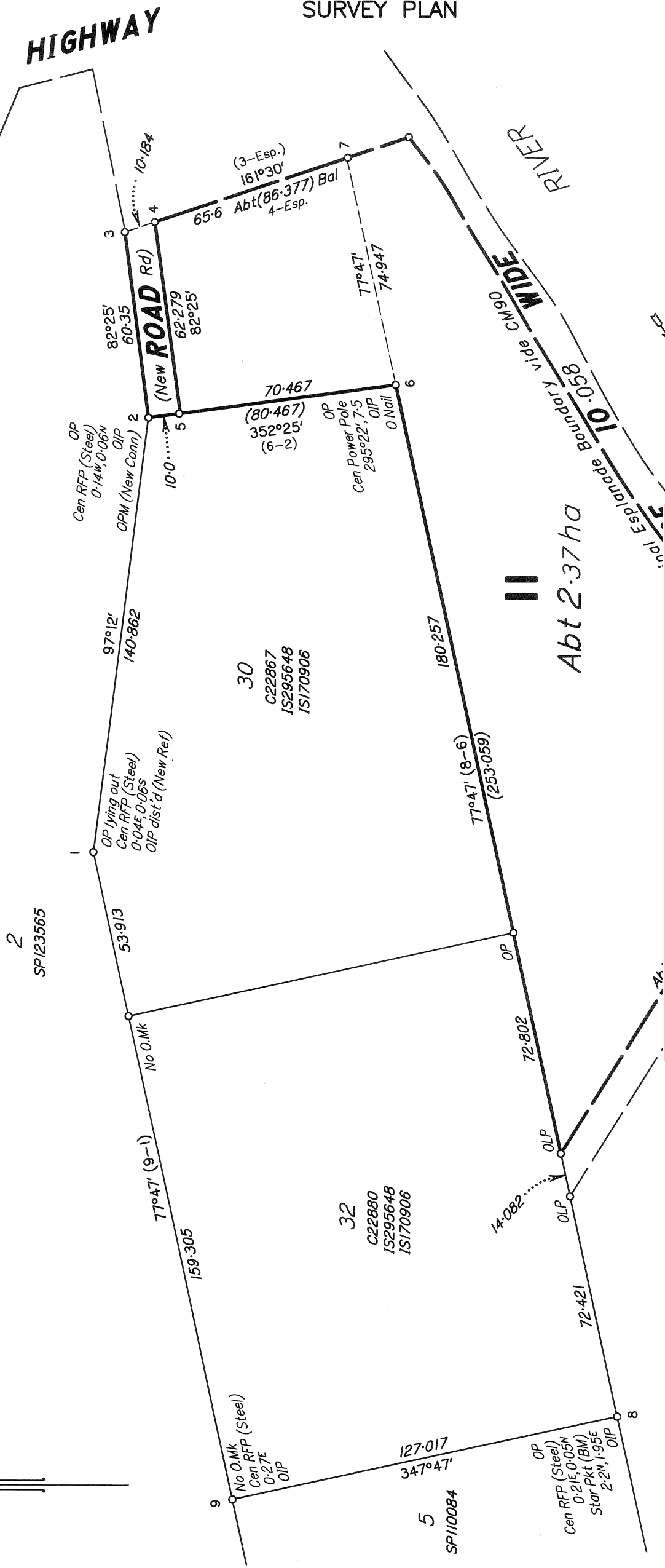
				SURVEY DATA		GBA ON BEHALF OF ANDREW SECCOMBE		SEDIMENT AND EROSION CONTROL NOTES - SHEET 03		PO Box 554 Beaudesert QLD 4285  (07) 5541 3500 www.acsengineers.com.au		<b>ACS Engineers</b> CIVIL   ENVIRONMENTAL   PROJECT MANAGEMENT	
				DATUM GDA94		73 ELM ST, BARCALDINE, QLD 4725		ENGINEERING CERTIFICATION (RPEQ)		JOB NUMBER 200109		06	
				MAP GRID MGA-55				# FIELD NAME SIGNATURE DATE		1		OF	
				HEIGHT ORIGIN -		THOMSON RIVER CARAVAN PARK		13697 CIVIL S.SHAY [Signature] 02/11/20		DRAWING NUMBER ACS-200109-SWM-06		06	
1		ISSUE FOR APPROVAL		SLS 02/11/20		LANDSBOROUGH HIGHWAY, LONGREACH, QLD, 4730							
		REVISION/DETAILS		DWN DATE		DES DATE							
<small>FILE: G:\SYNERGY\PROJECTS\20\200109 GBA - THOMSON RIVER CARAVAN PARK\DESIGN FILES\ACS-SWMP-200109.DWG PLOT TIME: 02/11/2020 - 6:18PM BY USER: DRAFTING</small>													

SURVEY PLAN

STN	TO	ORIGIN	BEARING	DIST
1	OIP dist'd (New Ref)	4/IS170906	94°48'30"	1-836
2	OIP	5/IS170906	277°12'	1-337
3	Pin		301°46'	1-318
6	OIP	6/IS170906	168°40'22"	1-108
6	O Nail in conc	6/IS295648	171°51'	4-209
7	Pin		308°53'30"	2-183
8	OIP	7/IS170906	257°47'	1-744
9	OIP	1/SP110084	257°47'	1-744

PM	ORIGIN	BEARING	DIST	NO	TYPE
2-OPM (New Conn)		167°03'25"	726-179	208824	Star Pkt

Area of New Road  
(2-3-4-5) ..... 6/3 m<sup>2</sup>



**LONGREACH REGIONAL COUNCIL**  
**DIGITALLY STAMPED**  
**APPROVED PLAN**

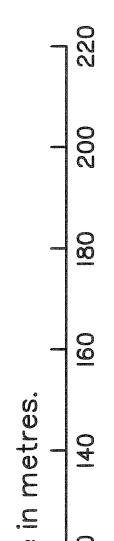
**Development Application:** Minor Change to Development Permit DA20/21-003 for Material Change of Use for a Tourist Park (150 caravan and camping sites)  
**Property Description:** Lot 30 C22867, Lot 32 C22880 and Lot 11 on SP332287

Referred to in Council's Decision Notice  
**Approval Date:** 13 July 2022

**REINSTATEMENT REPORT**  
 Plans searched: IS295648, CM90.  
 Good general agreement was found with reference marks from IS295648, with the exception being the disturbed reference mark at stn 1. Department of Resources advice has been to adopt original bearing, distances and area from Portion 11 on CM90 where not surveyed and to plot esplanade from CM90.

Reg. placed at sts 3, 4, 5 and Line Peg. placed at stn 7.

Original information compiled from plan CM90 in the Department of Resources.



MASTERS SURVEYING PTY LTD (ABN 57 605 342 176) hereby certify that the land comprised in this plan was surveyed by the corporation, by Scott Warwick Champion, surveying graduate, for whose work the corporation accepts responsibility, under the supervision of Thomas John McDonald, cadastral surveyor, and that the plan is accurate, that the said survey was performed in accordance with the Survey and Mapping Infrastructure Act 2003 and Surveyors Act 2003 and associated Regulations and Standards and that the said survey was completed on 28/04/2021.

*AWC*

Director

Date

21-5-2021

Plan of Lot II

Cancelling Lot II on plan CM90

LOCAL GOVERNMENT: LONGREACH REGIONAL COUNCIL LOCALITY: LONGREACH

Meridian: IS295648

Survey Records: No

Scale: 1:1500

Format: STANDARD



SP322810